

# EndomeTRIO

The endometrium matters

by Igenomix®

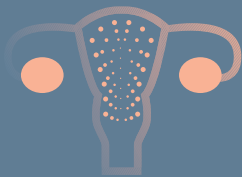
**A complete view of  
endometrial health**

to help you in your  
reproductive journey



**Igenomix®**

PART OF VITROLIFE GROUP



# EndomeTRIO

The endometrium  
matters

## AREA OF ANALYSIS



### ERA<sup>®</sup>

Endometrial  
Receptivity Analysis

#### Endometrial Receptivity Analysis

ERA evaluates endometrial receptivity and determines the optimal time to perform embryo transfer.

Endometrial  
receptivity



### EMMA

Endometrial Microbiome  
Metagenomic Analysis

#### Endometrial Microbiome Metagenomic Analysis

EMMA provides information on the proportions of all endometrial bacteria, including those linked to higher pregnancy rates. Includes ALICE.

Chronic  
endometritis  
+  
Bacterial  
flora



### ALICE

Analysis of Infectious  
Chronic Endometritis

#### Analysis of Infectious Chronic Endometritis

ALICE detects the presence of bacteria known to cause chronic endometritis and recommends the most suitable treatment.

Chronic  
endometritis

EndomeTRIO includes all 3 tests



# The endometrium matters

The endometrium is the layer of tissue lining the uterus, where an embryo implants and develops throughout pregnancy.

IGENOMIX leads the research in this field by developing new tests to address different aspects of endometrial

**Recent studies report that the endometrium plays an important role in reproductive success**

**Do you want to learn more about your endometrial health?**

With only one endometrial sample, you will gain a better understanding of your endometrial health, to improve your chances of a successful pregnancy.

# ERA<sup>®</sup>

## Endometrial Receptivity Analysis

**During an IVF treatment, the embryo may not implant successfully if the transfer was performed outside the optimal time.**

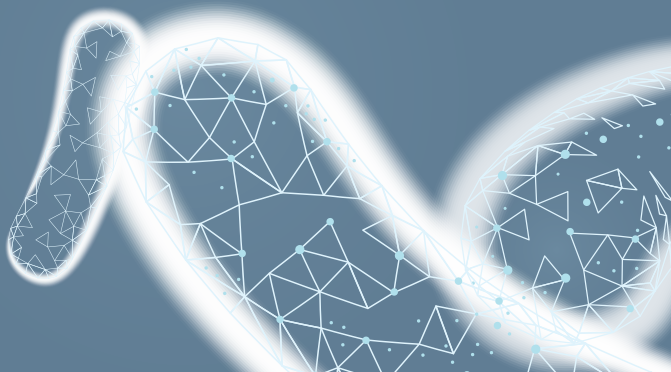
The endometrium is only receptive for a short period of time - this is called the window of implantation (WOI), and varies from one woman to another.

**ERA is a diagnostic test that allows a personalised embryo transfer by synchronising the embryo with the patient's window of implantation\***

\*Ruiz-Alonso et al, Fertil Steril. 2013.

Simon et al. Reprod Biomed Online. 2020; 41(3):402-415.

Ruiz-Alonso et al. Hum Reprod. 2014; 29(6):1244-7



# EMMA

## Endometrial Microbiome Metagenomic Analysis

**Endometrial health is essential for a successful pregnancy.**

EMMA evaluates your endometrial microbiome and recommends the best treatment to balance your endometrial flora, therefor improving your pregnancy prospects.

**If the levels of  
healthy bacteria in  
the endometrium  
are low, your chance  
of pregnancy may  
be reduced\*\***

**\*\*** Moreno et al. Am J Obstet Gynecol 2016; 215(6):684-703.  
Moreno et al. Microbiome. 2022; doi: 10.1186/s40168-021-01184-w.  
Moreno et al. AJOG. 2020;222(4):296-305



# ALICE

## Analysis of Infectious Chronic Endometritis

**Chronic endometritis is one of the causes of infertility. This disease causes endometrial inflammation, with no visible symptoms in most cases.**

Traditional diagnostic methods cannot accurately identify the infectious bacteria, and non-specific antibiotics are often prescribed.

ALICE detects the most frequent bacteria known to cause chronic endometritis and recommends specific antibiotics and probiotics for successful treatment.

**Chronic endometritis affects up to 30% of infertile patients. In cases of repeated implantation failure or recurrent pregnancy loss, this can rise to 66%\*\*\***

\*\*\*Cicinelli et al. Reprod Sci 2014; 21(5):640-7.

Cicinelli et al. Hum Reprod, 2015; 30(2):323-30.

Other publications:

Moreno et al. Am J Obstet Gynecol 2018; 218(6):602.e1-602.e16





[www.igenomix.co.uk](http://www.igenomix.co.uk)  
[info.uk@igenomix.com](mailto:info.uk@igenomix.com)  
+44(0)20 8068 8176